



URLs You May Need:

<http://cas1.eku.edu/auth>
<https://webapps.eku.edu/stuvirus/>
<http://update.microsoft.com/>

Login:

Your EKU Email (E-key) Username and Password are needed

Authentication Server:

<Student> All students use this setting.

Hardware Needed to Connect (Wired Connection):

- 10 or 10/100 Ethernet card
- Network cable (RJ45 CAT5)
- A computer that is running Windows XP SP3, Vista SP1 or Mac OS X

Software Needed to Connect (PCs):

- Symantec Endpoint Protection EKU edition (SEP)—we supply for free
- Cisco NAC —we supply for free
- All critical Microsoft Windows service packs and updates—download off the Internet

New Connections:

When you move into your room you should do these things:

1. Using your CAT 5 cable, hook your computer's Ethernet adapter to the data jack in your room (located on the same box with your telephone and cable jacks). Restart/Turn on your computer.
2. To start the connection process, open your Internet browser (e.g., Internet Explorer) and, if not redirected to the login page, try to visit this page: <http://www.google.com> or <http://www.yahoo.com> . You should be redirected to another page. Click "Yes," if prompted, until you get to a web login screen. (See ResNet Login Image on Back)

3. You should enter your EKU email (E-key) USERNAME and PASSWORD to download the Cisco NAC. Click the button to launch the Cisco installation and restart your computer. (See Cisco Launch image on back)

4. When you restart your computer the Cisco NAC login box should automatically popup when it detects your network connection (See Cisco Login image on back). If it does not pop up check your system tray for the Cisco NAC logo, right click it and select login (See System Tray image on back). If the logo is not in the system tray, click on the Cisco NAC icon on your desktop (See Cisco Icon on back). If, after attempting this you still do not see the login box, call us at 2-3050.

5. Your login to the NAC client is also your e-mail (E-key) USERNAME and PASSWORD. Make sure the server selected is "Student".

6. Once you're logged in you have to satisfy security policies in order to connect to the residential network. You'll be required to download EKU's version of SEP and install required Microsoft critical updates. At the remediation screen you will select "Repair" to fix any issues that are preventing your access to the network (See Remediation Issues on back). During this time you will have 1 hour of temporary network access to allow you to correct these issues.

7. If you are required to download SEP, Cisco NAC will have a button that will take you to EKU's download site for SEP. Download and install the program.

8. If you are required to install Microsoft Updates, Cisco NAC will display a button that links to Microsoft's Update site. This site will search for any updates your computer requires.

NOTE: Mac's will follow the steps above, but will only have to install Cisco NAC and an EKU provided Antivirus to be granted access to the network.

WIRELESS: Following this connection process should also configure your secure wireless access. If not, please contact us at 2-3050.

IF AT ANY TIME YOU HAVE AN ISSUE CONNECTING, PLEASE CALL 2-3050

<SEE REVERSE SIDE FOR IMAGES>



EKU Resnet Login

Username

Password

Domain

Please provide your credentials to access this network.

ResNet Login



Cisco Login

Network Security Notice: This network is protected by a Cisco NAC Appliance Agent, a component of the Cisco NAC Appliance Suite. The Agent ensures that your computer meets the requirements for accessing this network, and helps you keep your computer secure and up-to-date.

Please use the Agent to log in to the network.

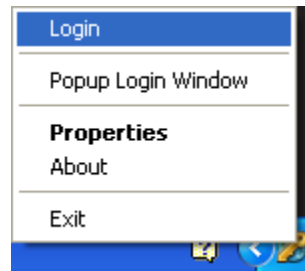
If you don't have the Agent software yet, download it by clicking the button below. After downloading the installation file, run it to complete the installation.

If you have already downloaded and installed the Agent, please close this window and right-click the Agent icon in the system tray and choose Login from the menu. Enter your usual network user name and password in the login window.

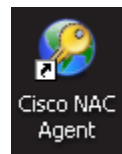
[Launch Cisco NAC Windows Agent 4.6.2.1131](#)

Note: If you are already running the NAC Agent and you are connected through a slower connection (such as VPN or dial-up), please wait as it might take a few moments for the Agent to pop up.

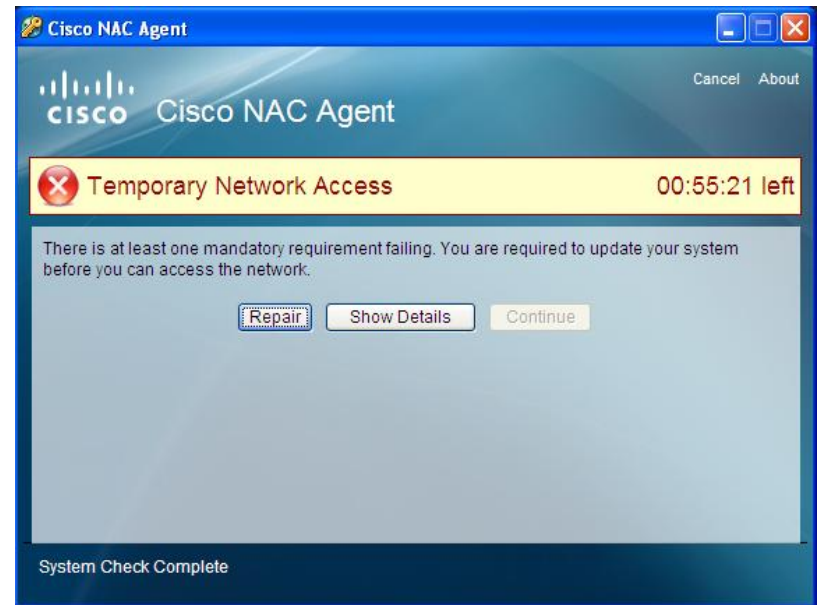
Cisco Launch



System Tray



Cisco Icon



Remediation Issues